



500 Woodward Ave.  
29th Floor  
Detroit, MI 48226  
Website: [www.dtmidstream.com](http://www.dtmidstream.com)

## AN IMPORTANT MESSAGE ABOUT DT MIDSTREAM'S UTICA GATHERING NATURAL GAS PIPELINES

DT Midstream's Utica Gathering operates about 16 miles of natural gas gathering system known as DTM Utica in the state of Ohio, Noble county. DT Midstream is committed to providing reliable, quality service to our customers - while making safety a priority.

DT Midstream diligently monitors its network of underground pipelines that carry clean burning natural gas from production to the interconnect to interstate transmission pipelines. These pipelines help fuel our economy and way of life. Our trained employees inspect gas delivery systems, both by air and land, to look for evidence of a pipeline leak or damage.

Natural gas pipelines are very safe. In fact, the U.S. Department of Transportation records show that pipelines consistently have the highest safety record among all major transportation systems.

If you are among the many people who live or work near a natural gas pipeline, we need your cooperation to help ensure the safety of our pipeline system and your neighborhood. Please read the information provided so that you can become familiar with our pipelines and emergency processes. Thank you.

Sincerely,

DTM Utica, LLC

### EMERGENCY CONTACT: 1-800-363-9541 (Toll Free)

**PRODUCTS/ DOT GUIDEBOOK ID#/ GUIDE#:**  
Natural Gas      1971      115

### OHIO COUNTIES OF OPERATION:

Noble

*Changes may occur. Contact the operator to discuss their pipeline systems and areas of operation.*



**Know what's below.  
Call before you dig.**

## GUIDELINES FOR RESPONDING TO AN EMERGENCY AT A DT MIDSTREAM UTICA FACILITY

DT Midstream's Utica facilities include above ground facilities consisting of main line valves, a measurement regulating station, gas treating facilities, gas compression facilities, and an odorant injection site.

### WHAT TO DO

- Call DT Midstream's Utica LLC at the telephone number on our pipeline markers (1-800-363-9541).
- Cordon off the area and begin to evacuate persons a safe distance away.
- Direct traffic away from the hazardous area.
- Control or limit secondary fire damage only to property or buildings that are not part of the pipeline.
- Coordinate with DT Midstream's Utica personnel in effecting a safe return to service of our pipeline facilities.

### WHAT NOT TO DO

- DO NOT attempt to extinguish a fire on any of our pipeline facilities unless requested to do so by DT Midstream's Utica personnel.
- DO NOT attempt to gain access to any of our fenced and locked facilities.
- DO NOT attempt to close any of our valves.
- NEVER attempt to repair any of our damaged pipeline facilities.

DT Midstream, along with your help, can minimize the hazards to persons and property resulting from a leak, fire or explosion.

### HOW TO IDENTIFY A PIPELINE

DT Midstream's Utica LLC along with your help, can minimize the hazards to persons and property resulting from a leak, fire or explosion.

Please remember . . . before you break ground, Ohio law requires that you call 811 or contact PA-One Call System at least 48 hours in advance to have the location of underground pipelines

marked. Natural gas pipelines will be marked with yellow paint, flags or stakes. You can also contact Ohio-One Call System by dialing 811 or 800-362-2764. It's FAST, It's Free, and it's the LAW.



## WHAT HAPPENS IF A PIPELINE IS DAMAGED?

Damage to pipelines occurs most often when people dig near a pipeline location. Pipelines can be accidentally hit, dented, scraped or gouged. Sometimes, there may not be any apparent damage to the pipeline.

When a pipeline is damaged, the supply of natural gas could be interrupted. A damaged pipeline can leak natural gas – possibly causing fires, explosions or asphyxiation. These hazards could also be caused by:

- Extreme natural events such as floods and tornadoes
- Fire or explosion near a pipeline
- Collapsed buildings that break or damage gas pipelines
- Water main breaks that weaken roadways and pavement, damaging gas pipelines
- Under or overpressure in the gas system
- Equipment failure
- Uncontrolled escaping gas

Automated control centers monitor our gas system. Alarms are activated when any abnormalities occur in gas pressure, flow, or temperature. We quickly respond to any natural gas emergency. If your digging equipment or tools make contact with the pipeline, **stop your excavation and contact the utility company immediately.**

### Possible signs of a gas pipeline leak:

- A blowing or hissing sound
- Dust blowing from a hole in the ground
- Continuous bubbling in wet or flooded areas
- An odor similar to the smell of rotten eggs
- Dead or discolored vegetation in an otherwise green area
- Abnormally dry or hardened soil
- Flames, if a leak has ignited

## If a pipeline leak or emergency occurs:

- Evacuate occupants from the building and/or area. Do not use any telephones (including cell phones), doorbells, light switches, pagers or any other electrical equipment.
- Avoid all open flames. Do not smoke.
- Do not start up or shut down any machinery, vehicles or equipment in or near the area.
- Keep people at a safe distance from the area.
- Upwind of a leak is the safest place to be.
- Do not attempt to stop the leak. If the gas is burning –let it burn. Do not attempt to extinguish the flame. Burning gas will not explode.
- Call DT Midstream pipeline emergency number, 800-363-9541 immediately from an outside phone that is a good distance away from the leak area.

## PLANNING TO EXCAVATE?

If you are planning to excavate, DT Midstream wants to remind you to dig safely through four simple steps:

- 1. Call 811 or contact PA One Call System.**  
It's fast. It's free. It's the law.
- 2. Wait until marks are present.**  
Allow at least three business days for DT Midstream's Midstream Appalachia and all other utilities to mark the lines in your designated work area.
- 3. Expose utility lines by hand-digging.**  
Before using any power equipment, carefully hand-dig where the utility lines are marked to expose them. If you are unable to locate the utility lines, please contact DT Midstream's Midstream Appalachia and wait for assistance.
- 4. Respect the marks.**  
Stay aware of all underground utility line locations, even if you're not working near them. And never drive heavy vehicles or store materials over marked utility lines. Remind children not to remove the flags and if a child pulls out the utility flags, do not attempt to place the flags back in the ground. Call 811 or contact PA One Call System to indicate the utility lines need to be marked again.

Notify DT Midstream's Midstream Appalachia if your digging equipment or tools contact our underground pipelines. Minor damage, such as nicks, scratches, cuts, scrapes, dents or gouges, can result in pipeline failure or a major incident in the future if not properly assessed beforehand. Contact DT Midstream's Midstream Appalachia before back-filling your excavation.



## FACTS ABOUT NATURAL GAS

**Natural gas is a safe fuel.** It has a very limited range of flammability. It requires the right mixture of air and natural gas before it will burn – roughly between four percent and fifteen percent natural gas. Natural gas has a very high ignition temperature, about 1100° F.

### Natural gas is naturally odorless.

Natural gas has no odor or color. DT Midstream adds a harmless chemical to give natural gas its distinctive scent. It smells kind of like rotten eggs – that helps all of us easily detect gas leaks. Please note: Not all pipelines carry odorized natural gas. Dead vegetation, blowing dirt, hissing or roaring noises are signs that a natural gas leak could be present.

**Natural gas is non-toxic and lighter than air.** In large concentrations it will displace the air in enclosed spaces and cause suffocation because of the lack of oxygen. However, it will rise and disperse if released into open air.

## CHANGES ON THE PIPELINE ROUTE

DT Midstream would like to know if there are any changes to how routes along the pipeline are being used. Changes could include new churches, schools, hospitals, day-care centers, assisted-living facilities, campgrounds or other buildings and outside areas where people congregate.

You can help by alerting us to any of these identified sites or reporting any unusual activity that is near our pipeline facilities. Go to [dtmidstream.com](http://dtmidstream.com) and click on Safety/Community to report new activity.

Please contact DT Midstream's Midstream Appalachia for more specific information regarding our emergency response program.

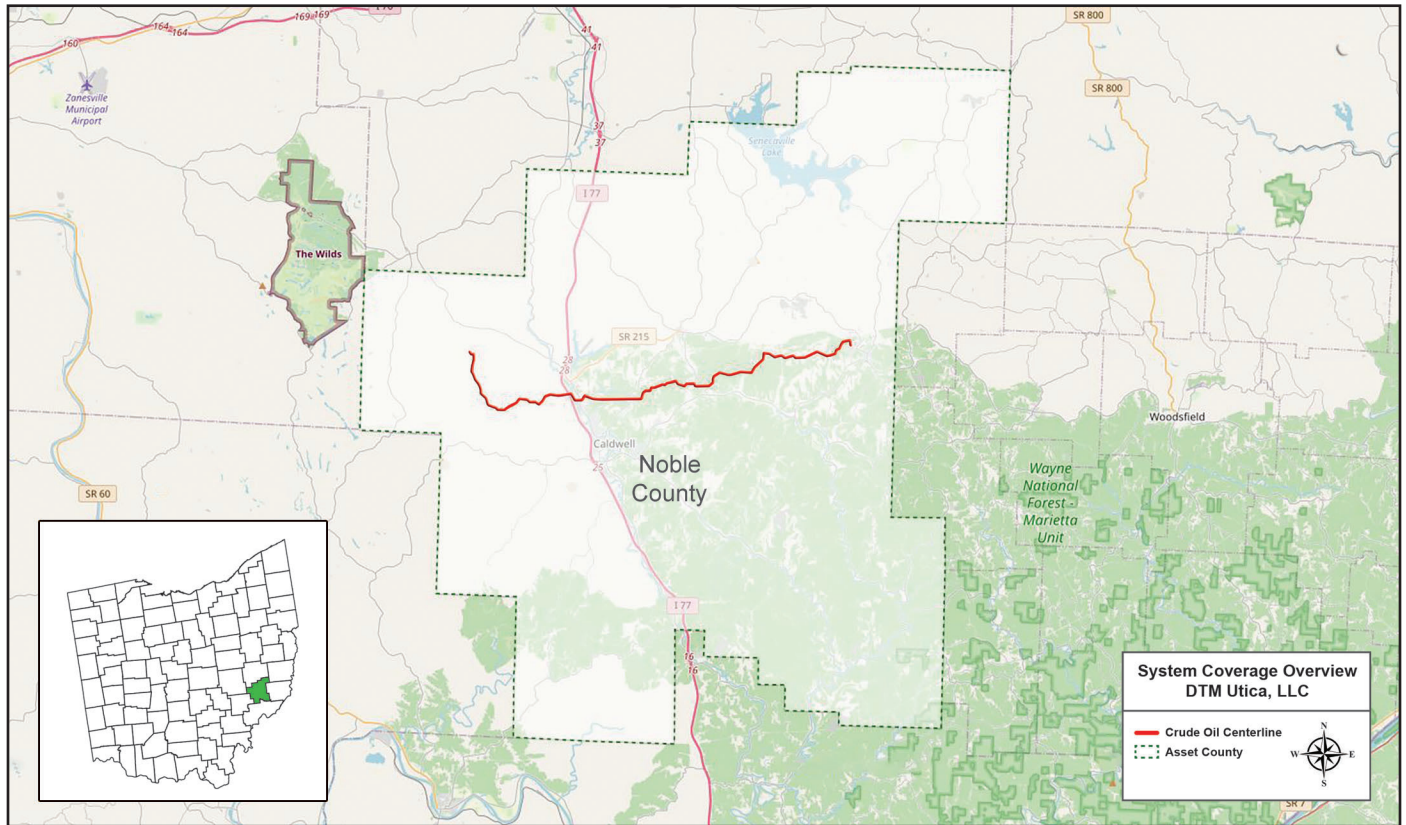
To view a list of pipeline operators in your area, visit : [npms.phmsa.dot.gov](http://npms.phmsa.dot.gov)

If you would like additional information about excavation safety and damage prevention, contact PA One Call System.

Thank you for taking time to read this information. Your cooperation helps to ensure the safety of our natural gas pipeline system and your neighborhood.

## CONTACT

Mike Graves  
Director, Gathering System  
Phone: (570) 280-3103



Base map courtesy of openstreetmap.org